

May 12, 2020

Los Angeles Regional Interoperable Communications System

**Informational Meeting for Scholl Canyon Public Safety
Communications Site (SCHCYN)**



The background of the slide is a photograph of firefighters at an emergency scene. In the foreground, several firefighters in yellow gear are visible. One firefighter in the center has "MARRONE" on their jacket. To the right, another has "PEMBERTON" on their jacket. In the background, a yellow CAT truck is parked, with "CAT" and "17286" visible on its side. The scene is filled with smoke and emergency lights, creating a sense of urgency.

- **What is LA-RICS?**

A modern telecommunications network for emergency responders dedicated to keeping you safe.

Countywide day-to-day mission critical voice communications network.

Technically and structurally designed to sustain **large emergency scenarios** such as earthquakes, fires, and planned attacks.

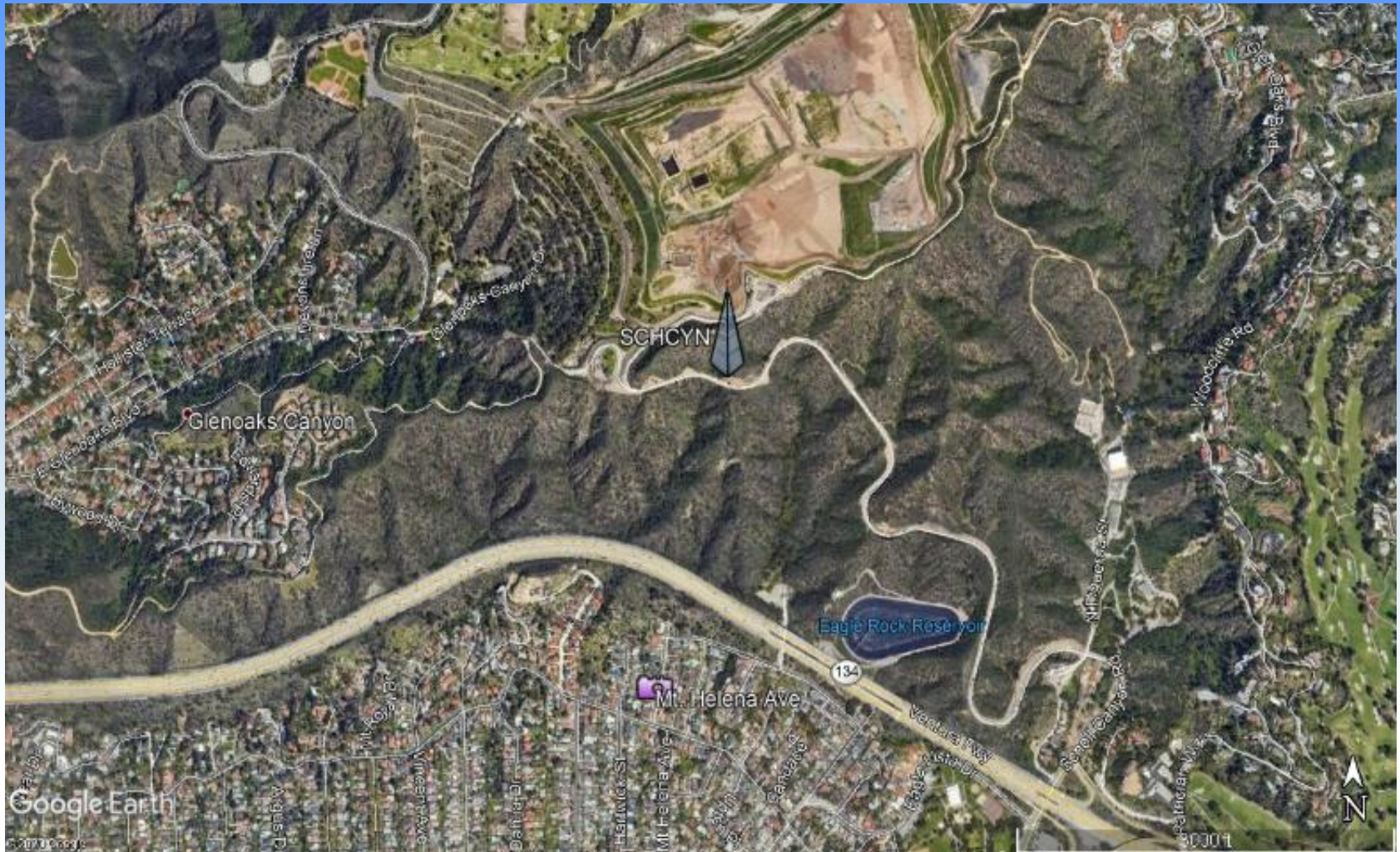
The background of the slide is a photograph of firefighters at a scene. The image is semi-transparent and has a blue tint. In the foreground, several firefighters in yellow gear are visible. One firefighter in the center has "L.A. COUNTY FIRE DEPT." and "MARRONE" on their jacket. To the right, another firefighter has "PEMBERTON" on their gear. In the background, a yellow fire truck is partially visible with "CAT" and "17286" on it. The overall scene is a fire or emergency response.

- **Nationwide Public Safety Network**

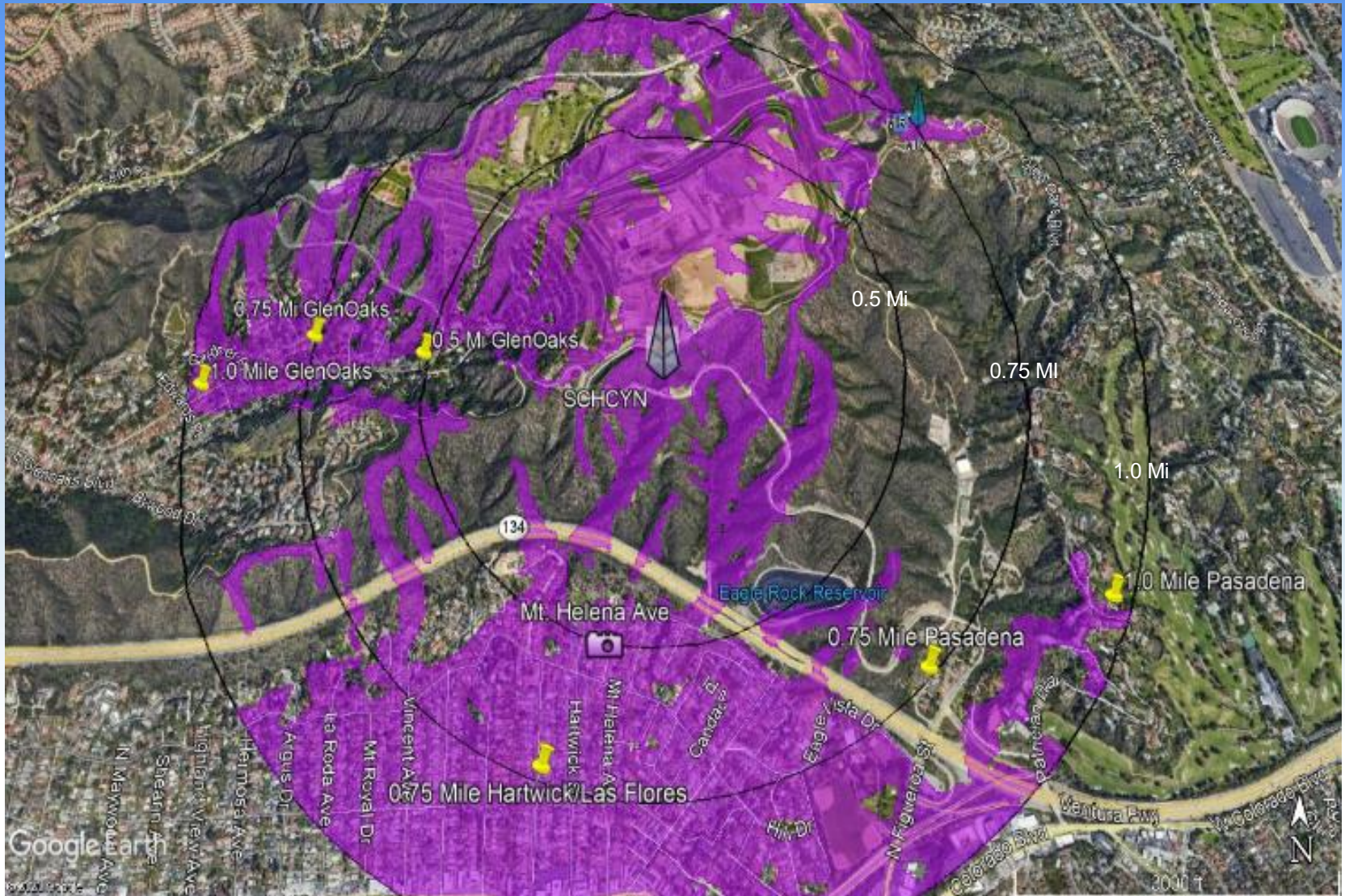
LA-RICS in conjunction with FirstNet is implementing additional LTE sites to be used to augment FirstNet's coverage throughout LA County.

The focus of these additional sites is to provide better coverage for public safety users, ultimately ensuring their ability to better serve citizens.

Contribution to Long Term Evolution (LTE) Coverage



Scholl Canyon Landfield Viewshed (Miles)



Pasadena View of Landfill

Current View of Landfill – 0.75 miles



Current View of Landfill – 1.0 miles



Glen Oaks View of Landfill

Current View of Landfill – 0.5 miles



Current View of Landfill – 0.75 miles



Eagle Rock View of Landfill

Current View of Landfill – 0.5 miles



Photosim of Site at Landfill – 0.5 miles



Eagle Rock Ave View of Landfill

Current View of Landfill – 0.75 miles



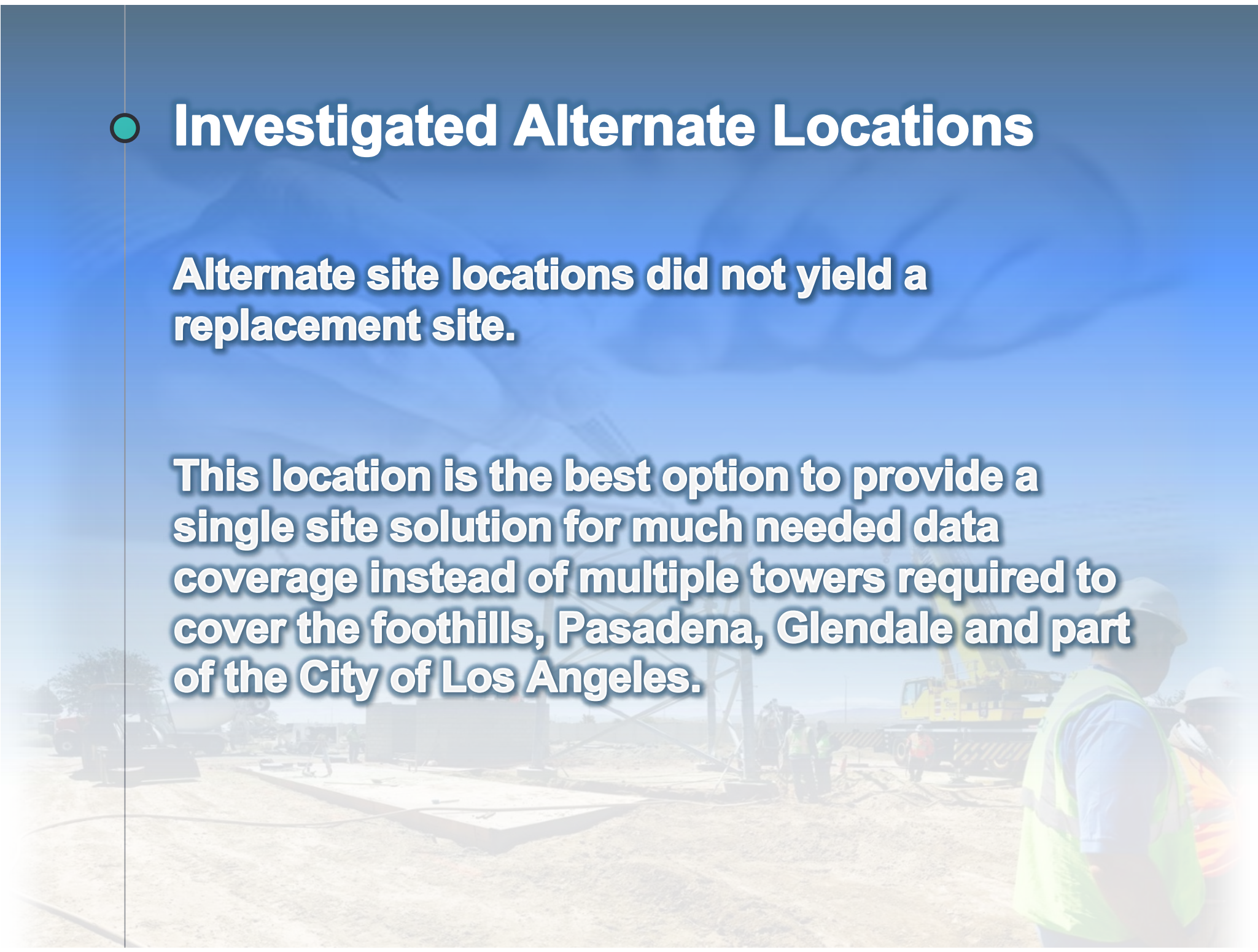
Current View of Landfill – 1.0 miles



● Investigated Alternate Locations

Alternate site locations did not yield a replacement site.

This location is the best option to provide a single site solution for much needed data coverage instead of multiple towers required to cover the foothills, Pasadena, Glendale and part of the City of Los Angeles.



● Scholl Canyon Environmental Compliance

California Environmental Quality Act (CEQA)

- Site was determined categorically exempted under CEQA Guidelines Section 15303, 15304, and 15332
- Notice of Exemption (NOE) initially filed by LA-RICS Board on August 1, 2019
- NOE filed by LA County CEO-RED on September 19, 2019

National Environmental Policy Act (NEPA)

- Site included in Supplemental Environmental Assessment #5
- Finding of No Significant Impact (FONSI) issued by National Telecommunications and Information Administration on January 16, 2020

All Endangered Species Act and National Historic Preservation Act compliance was completed (as documented in FONSI)

● Next Steps

Obtain all applicable jurisdiction permits (in progress).

Construction anticipated to start in Q2 of 2020.



Thanks!

ANY QUESTIONS?

CONTACT

Wendy Stallworth-Tait

info@la-rics.org

(323) 881-8131

